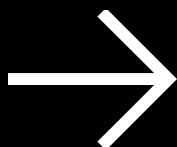
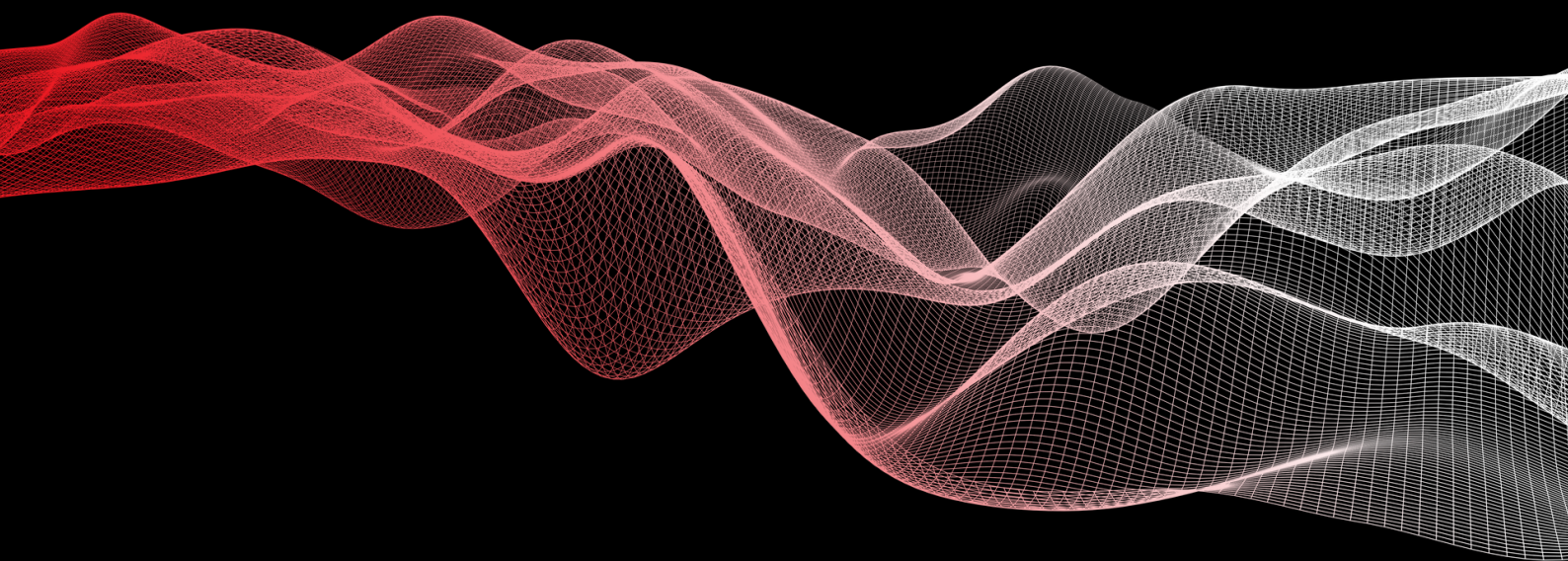


OUR SERVICES

---



world-leading smart-building consultants



# Table of contents

- 
- 01** / About us
  - 02** / Site Packs
  - 03** / Engineers Pack
  - 04** / Cinema Design
  - 05** / Visualisation
  - 06** / Unlimited Proposals
  - 07** / Project Books
  - 08** / Meet our team
  - 09** / Contact us
- 





# About designflow

Designflow was formed in October 2015 as a collaboration between Jones designs and Kelly Ashforth design.

Our sole purpose is to help systems integrators to be more professional, win more jobs and be more profitable, through the use of proper system design and documentation. We have helped many system integrators take their businesses on to the next level by providing them with impressive proposals, detailed design and documentation. Also helping guide many of them around the pitfalls of being a systems integrator, using our vast experience within the smart building and home technology industries.

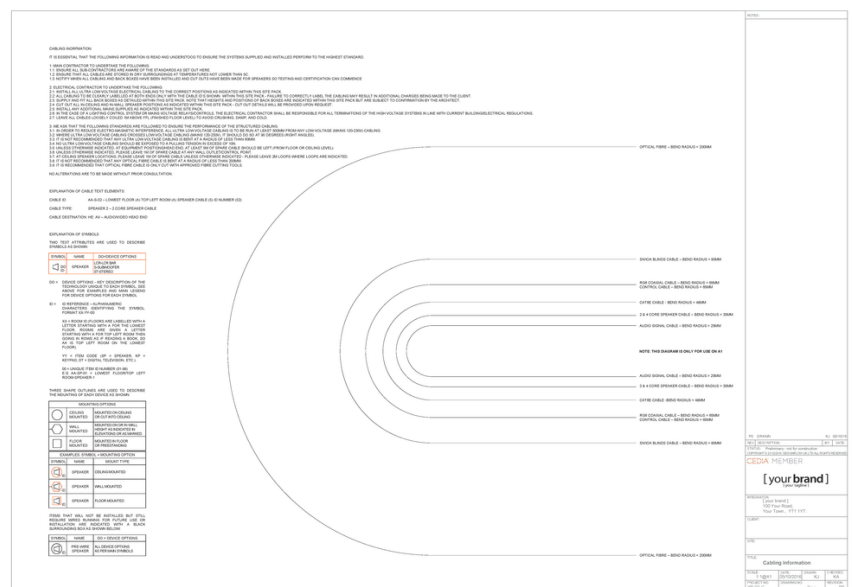




# Site Packs

**All the design & documentation needed to control the installation of the cabling on site.**

We can produce General Arrangement drawings, full Wiring Schedules, and Equipment Elevations for any system design, to suit your requirements. Providing systems integrators with efficient and accurate wiring plans and schedules on time to enhance your professionalism. The inclusion of equipment elevations clearly communicates exactly what is required on site. Our clear, J-standard adherent General Arrangement drawings allow you to communicate clearly with all collaborators and stakeholders on a project.

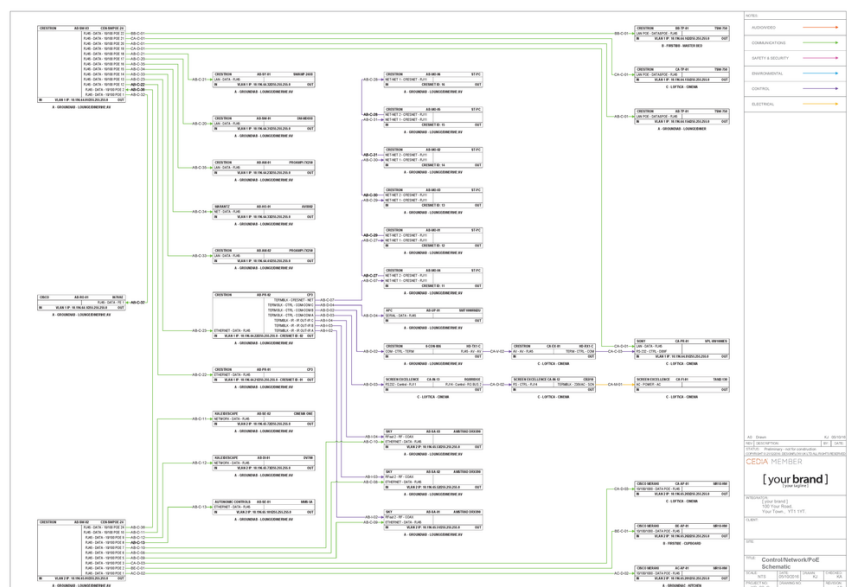




# Engineers Packs

**All the design & documentation needed to coordinate engineers & programming teams.**

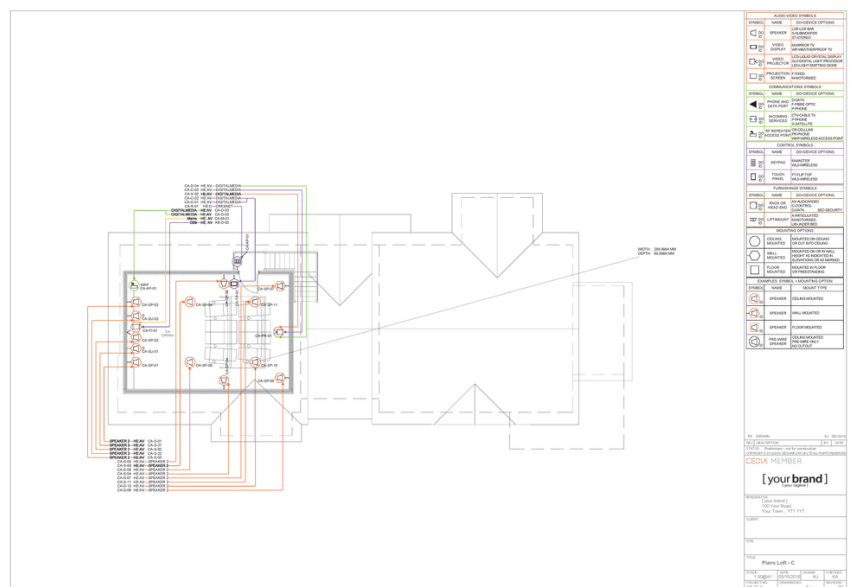
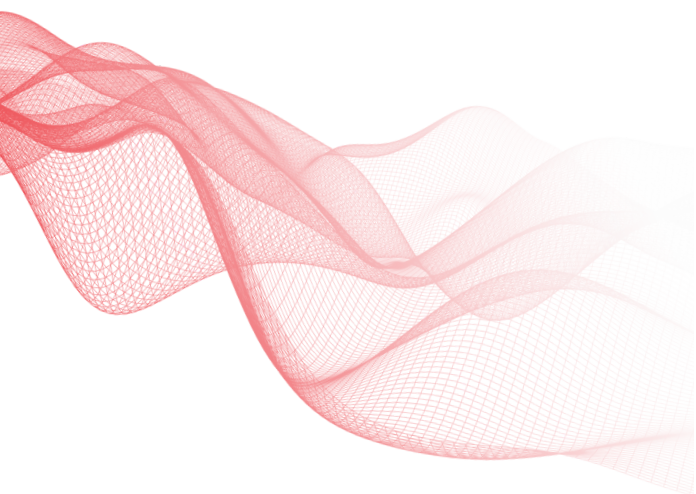
Reduce project management, minimise problems during installation and have fewer call outs after completion, with precise thorough Engineers drawings. Our detailed Rack Drawings and colour-coded Connectivity Schematics, will help demonstrate your engineering prowess to your clients.



# Cinema Design

**All the design & documentation needed to create an awe-inspiring cinema experience.**

Cinema is all about immersing the viewer in the film & soundtrack and the key to producing a convincing experience is design. The cinema environment needs to be designed correctly to control ambient light and sound. The video and audio systems need to be specified and designed to perform at their optimum to provide the ultimate user experience. We have worked closely with a high-profile loudspeaker manufacturer to produce various iterations their Dolby Atmos template. With vast experience of designing cinemas we are perfectly placed to help with the design of any room be it large or small for home or commercial use.



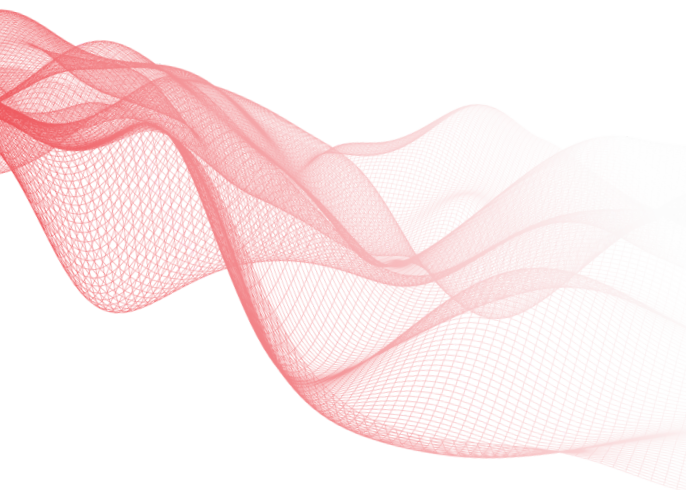




# Visualisation

**Provide complete clarity of design by showing how it will look before a single cable is laid.**

Manage your client's expectations from the project's inception with our photo-realistic CAD visualisations. Show off the end product before any work is carried out, providing assurance that what the client is committing to is exactly what is required and has the desired look and feel. 3D CAD visualisation provides a strong selling tool, allowing the client to see how the finished installation will look.





# Unlimited Proposals

**Let us do the heavy lifting by creating all the proposals you'll ever need for your projects.**

Take the delay out of turning quotes around; submit your client and site survey information to us and we will produce a professional, detailed proposal for you, to meet your deadline, with our design fees built in. Got a backlog of proposals? We can help! Win more jobs with our descriptive itemised proposals and get your clients to cover the system design fees. Increased detail, flexibility and visual impact are the hallmarks of our proposals giving you a slick polished presentation.

[your brand] <small>(your logo here)</small>	
<b>Control System</b>	
Ground: OA - Hallway: AVHIE	1 <b>Control System - Silver/Gold Processor Bundle</b> The control system provides a simple interface to music, TV & home control. Each controller can manage all of these elements within a room, or across the property and mobile devices can also be used as control interfaces. There will be controllers in the following rooms. Ground: OA - Hallway: AVHIE Total £2,066.42
Ground: OC - Living	1 <b>Control System - Touch Panel &amp; Remote Control Bundle</b> T3 series in-wall touch screen, 10", black Ground: OC - Living Total £2,172.88
Ground: OB - Kitchen	1 <b>Control System - Remote Control Bundle</b> Entertainment & Automation Controller with system remote and charging station Ground: OB - Kitchen Total £1,190.20
Ground: OD - Dining	1 <b>Control System - Touch Panel &amp; Remote Control Bundle</b> T3 series in-wall touch screen, 10", black Ground: OD - Dining Total £2,172.88
Front: 1A - Master Bed	1 <b>Control System - Touch Panel &amp; Remote Control Bundle</b> T3 series in-wall touch screen, 10", black Front: 1A - Master Bed Total £2,172.88 <b>Control System Total £9,775.26</b>
<small>Prices are inclusive of all installation, fees and accessories. VAT is excluded.</small> 26/5/18 4/18	
<b>CCTV System</b>	
Ground: OA - Hallway: AVHIE	1 <b>CCTV System - Silver/Gold 4 Zone 3TB Video Recorder Bundle</b> The CCTV system provides video monitoring at key points across the property, accessed and stored via a central monitor. The system can be viewed from any suitably enabled monitoring device through its connection to the networking system. External cameras work in both day and night conditions. The recorder has 1 terabyte of storage and can display high resolution images from up to 4 cameras around the property as set out below. Ground: OA - Hallway: AVHIE Total £1,806.36
Ground: OX - Front Garden	2 <b>CCTV System - PTZ Camera Bundle</b> Pan, Tilt & Zoom outdoor CCTV camera Ground: OX - Front Garden Total £2,169.80
Ground: OZ - Rear Garden	2 <b>CCTV System - PTZ Camera Bundle</b> Pan, Tilt & Zoom outdoor CCTV camera Ground: OZ - Rear Garden Total £2,169.80 <b>CCTV System Total £6,145.96</b>
<small>Prices are inclusive of all installation, fees and accessories. VAT is excluded.</small> 26/5/18 5/18	

# Project Books

## One for the client and one for your projects library.

Handover is arguably the most important part of any job. Get it right by giving your client one of our beautiful hard-backed A3 project books and have them recommending you to their friends and colleagues. With the installation complete, it's time to handover to the client. Impress them with one of our stunning handover books, documenting the full system design and all related project information.



# Meet our team



---

## **Keith Jones**

Partner

+44 (0) 20 7175 7273

[keith@designflow.co](mailto:keith@designflow.co)

---



---

## **Kelly Ashforth**

Partner

+44 (0) 20 7175 7274

[kelly@designflow.co](mailto:kelly@designflow.co)

---



---

## **Joel Pinto**

Systems Designer

+44 (0) 20 7175 7270

[joel@designflow.co](mailto:joel@designflow.co)

---



---

## **Graham Trood**

Systems Designer

+44 (0) 20 7175 7270

[graham@designflow.co](mailto:graham@designflow.co)



An abstract, white wireframe graphic of a human figure, possibly a woman, is positioned on the left side of the page. The figure is composed of a dense grid of lines that form the body, with some areas being more transparent or overlapping, creating a sense of depth and movement. The figure appears to be in a dynamic, flowing pose, with the arms and legs extending outwards.

# Contact us

+44 (0) 20 7175 7270  
[info@designflow.co](mailto:info@designflow.co)  
[designflow.co](http://designflow.co)

